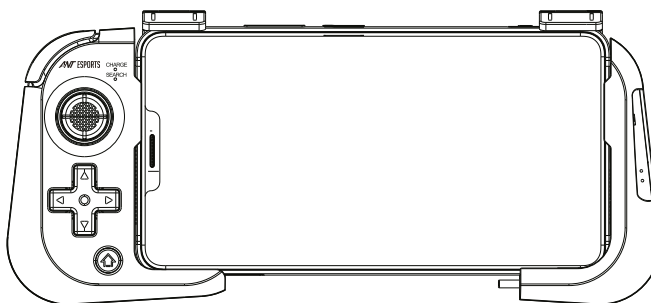


ANT ESPORTS MG15

User Manual & Warranty Card



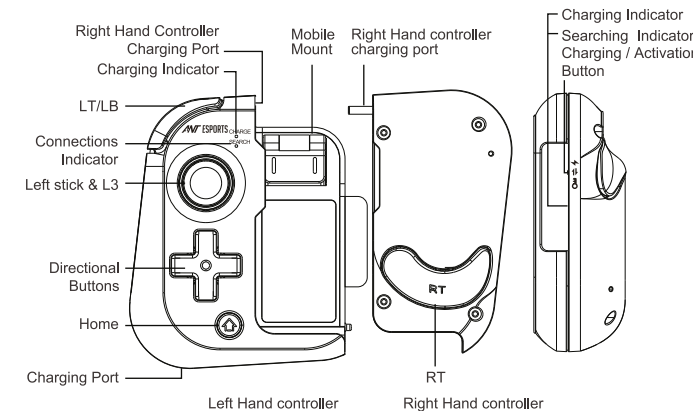
ANT ESPORTS Wireless Mobile Gamepad User Manual (Mg15)

Application instruction:

The wireless mobile gamepad is compatible for Android.
Unique Modular design with ergonomic structure.
High performance wireless connection without delay.

★ Due to the official game platform software upgrade or source code changes and other not resist factors caused of some games can not be played or connected with our gamepad. Our company has no responsibility, we reserves the right of final interpretation for this.

Function Keys



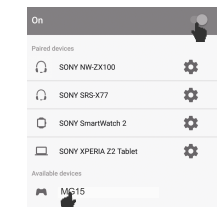
Specifications

1. Dimension : 87 mm x 83 mm x 30 mm
2. Weight : 90±5g
3. Transmission distance : 10 m
4. Charging Voltage : DC 5V
5. Battery life: 10 hours
6. Working current: Left hand controller ≤30 mA, Right hand controller ≤10 mA
7. Charging current: Left hand controller ≤150 mA, Right hand controller ≤150 mA
8. Charging hours: About 2 hours
9. Battery capacity: Left hand controller: 300 mAh/3.7V, Right hand controller: 250 mAh/3.7V

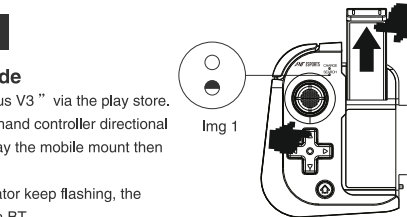
Operation instructions

Android V3 direct mode

1. Download the "ShootingPlus V3" via the play store.
First connection: press Left hand controller directional buttons "Up" and pull away the mobile mount then will start connecting.
While the connections indicator keep flashing, the controller able to connect via BT
2. Install the mobile to the mount, go to mobile 's BT list and click "MG15"
Once connected the connections indicator will always on.

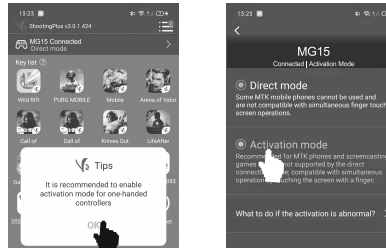


Img 2

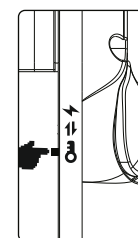


Img 1

3. Activation
Go to "ShootingPlus V3", the app has default the popular game button setting, users can remapping the button.

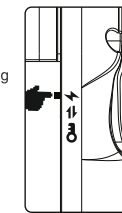


Switch the right hand controller "charging / Activation button" to "Active mode" (Img 3) and then plug the right hand controller plugin to the mobile TYPE-C port.

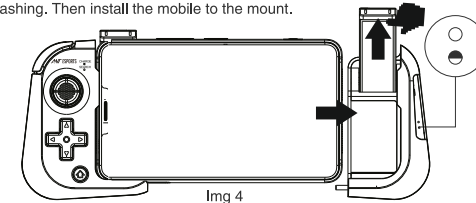


Img 3

Go to the "Developer options" and then turn on the "USB debugging"
*Mobile model will operate differently
After turn on the "USB debugging" please switch the button to the charging mode (Img 4)
Once activated, user do not need to process again for the next time.
* if any turn off / restart the mobile, please reactivate again

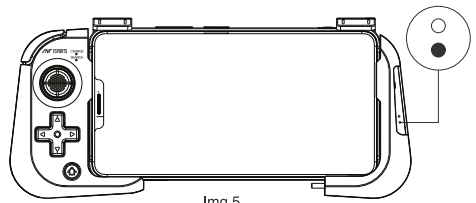


4. Once activated, pull away the right hand controller mount, the connections indicator will flashing. Then install the mobile to the mount.



Img 4

5. While the connecting successfully, the connection indicator will always on. (IMG 5)



Img 5

6. Go to "ShootingPlus V3", select the Activation mode, users can remapping the button. For more information please go to the manual "Android direct play button remapping function"

Android direct-connection button mapping function:

Check the default operation instructions at "www.antesports.com".
If you need to reset the game button, please download and install "ShootingPlus V3" APP from Google Play Store, remap the game buttons in the APP and adjust the button position



ShootingPlus V3

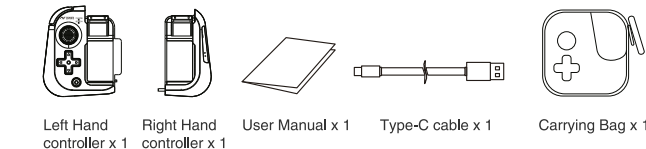
Charging & Trun off instruction

1. Charging Status
 - a. Low battery : Green light quickly flashing
 - b. Charging : Green light slowly flashing
 - c. Fully charged : Green light always on
2. Turn off the controller
 - a. Remove the mobile from the controller, controller turn off automatically while the lever turns back

Note

1. The mobile mount not only for holding the mobile to the controller, while put away the mount also can turn/off the controller.
2. MG15 will automatically connect the previous device while pull away the Left-hand controller mobile mount.
3. MG15 right hand controller not support using apart, it must use the left-hand controller to connect the mobile, First connection with the right-hand controller, highly recommend to stay within 10 cm.
4. While the MG15 not able to connect with mobile, please make sure that turn off the previous device BT function or remove the BT list "MG15" and reconnect again.
5. Due to the model of the mobile, if there are any connection issue, please restart the mobile and reconnect again.
6. Non-professional personnel should not disassemble the product, otherwise it will not be covered in the after-sales warranty service.

Accessories List



Left Hand controller x 1

Right Hand controller x 1

User Manual x 1

Type-C cable x 1

Carrying Bag x 1

ANT ESPORTS MG15

WARRANTY

Ant Esports MG15 Wireless Mobile Gamepad comes with 1 year international warranty.

Warranty Card

Customer Name : _____
Product Name : _____ Model No. : _____
Address: _____ Date of Purchase: _____
Dealer Name : _____ Phone No. : _____

*Note: Any alteration of the clauses and contents and copies are invalid.

*All product names, logos, and brands are property of their respective owners. All company, product and service names used here are for identification purposes only. Use of these names, logos, and brands does not imply endorsement.

CONNECT WITH US ON

www.antesports.com
support@antesports.com



India RoHS

This Product complies with the "India E-waste (Management and Handling) Rule 2011" and prohibits use of lead, mercury, hexavalent chromium, polybrominated biphenyls or polybrominated diphenyl ethers in concentrations exceeding 0.1 weight % and 0.01 weight % for cadmium, except for the exemptions set in Schedule 2 of the Rule.