

ANT ESPORTS GP115 WIRED GAMEPAD

User Manual & Warranty Card



ANT ESPORTS GP115 WIRED GAMEPAD

Warranty

Ant Esports GP115 Wireless Gamepad Comes With 1 Year International Warranty.

Warranty Card

Customer Name : _____
 Product Name : _____ Model No. : _____
 Address : _____ Date of Purchase : _____
 Dealer Name : _____ Phone No. : _____

CONNECT WITH US ON

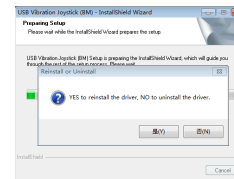
ANT ESPORTS
 www.antesports.com
 support@antesports.com

*Notice: Any alteration of the clauses and contents and copies are invalid.
 *All product names, logos, and brands are property of their respective owners. All company, product and service names used here are for identification purposes only. Use of these names, logos, and brands does not imply endorsement.

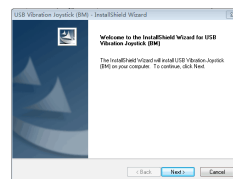
1. Please follow the steps to install the driver, as shown in the figure



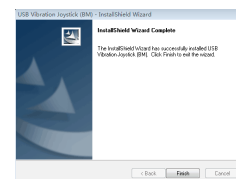
Window driver installation



2

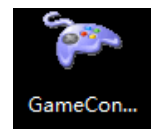


3



4

2. After successful installation, figure 1 and figure 2 will appear on the desktop, as shown in the figure below:



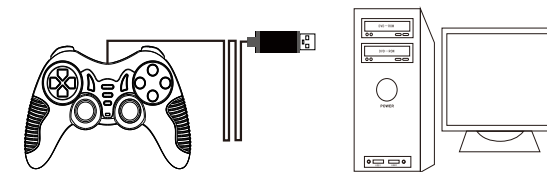
1



2

• Game controller test

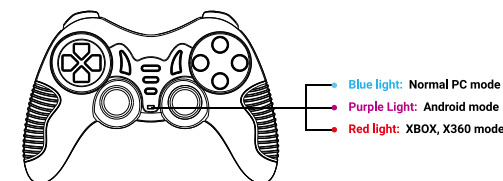
1. Insert the USB port of the gamepad into the USB slot of the computer. After automatic recognition by the system, the gamepad test interface can be launched to test gamepad functions.



2. The gamepad has memory function, so when testing, please pay attention to whether it is in the PC gamepad mode.

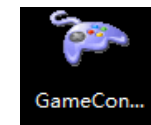
Three modes

To connect the computer, long press the MODE button for 8 seconds to switch



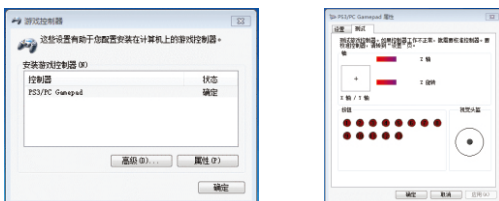
Step one:

Open the shortcut icon like shown

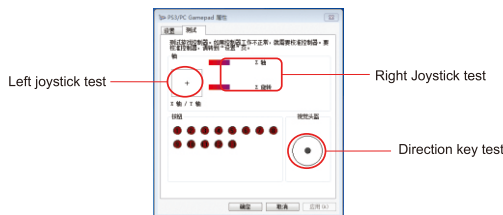


Step two:

Enter the "Game Controller" interface as shown in Figure 1. Click "Properties" to enter the interface as shown in figure 2



Check and press the joystick, then press the button, and the corresponding area will have an action or the cursor will flash..



Left joystick test

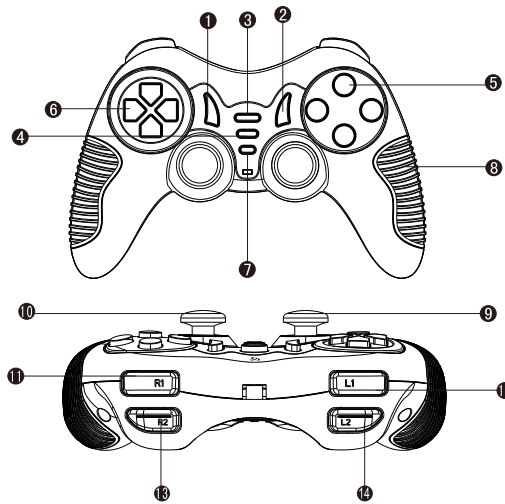
Right Joystick test

Direction key test

Note:

If the right joystick is flashing at 1.2.3.4, it will be digital mode. You can press the "MODE" key to return to the simulation test.

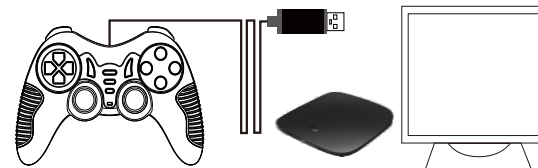
• Product picture & key function



- | | |
|---------------------|--------------------|
| 1. TURBO KEY | 8. NON-SLIP BUCKLE |
| 2. CLEAR KEY | 9. LEFT JOYSTICK |
| 3. SELECT KEY | 10. RIGHT JOYSTICK |
| 4. START KEY | 11. R1 BUTTON |
| 5. 1/2/3/4 FIRE KEY | 12. L1 BUTTON |
| 6. DIRECTION KEY | 13. R2 BUTTON |
| 7. MODE SWITCH KEY | 14. L2 BUTTON |

• Connct to Android devices Support multimedia box, Android TV

There is no need to install the driver. After the controller is inserted into the USB slot, the system will automatically recognize it. After the controller is recognized, the default Android mode will be shown.



Playstation 3 game console connection

There is no need to install the driver. After the handle is inserted into the USB slot, the system will recognize it automatically

Steam games

This controller is compatible with Steam games, but the game needs to be mapped with buttons before playing. Please refer to the manual for key mapping.

In The Box:

Gamepad, Manual, Charging Cable

ANT ESPORTS

GP115 WIRED GAMEPAD

OUR PRODUCT LINE-UP

PC Case | Gaming Chair | Mousepad | Mouse | Keyboard | Keyboard & Mouse Combo | Gamepad | Sound Card | Webcam
 Wireless Earphone | Headset | Headset Stand | Gaming Glasses | PSU MOD Cables | Storage | Memory | PC Docking Stations
 Speaker | Case Fans | CPU Cooler | LED Strip | Microphone | Power Supply | HDMI Cable